



# Point Spring & Driveshaft Co.

Since 1926

**PARTS • SERVICE • EXPERIENCE • SOLUTIONS**



**E-ZOIL**  
Performance. Pour it on.



## Chemicals

Part No.	Description	Price
M70-01	Mirror Finish Brightener	<b>\$41.49</b>
K50-01	E-Z Kleen Vehicle Wash	<b>\$18.99</b>
T90-01	Trailer Brightener	<b>\$32.99</b>
DG10-01	Heavy-Duty Degreaser	<b>\$34.49</b>



## Drain Valve

Part No.	Description	Price
EZ-106	EZ Oil Drain Valve Fits: Ford- 2012 & on, Power Stroke 6.7L Diesel - Not available for 2010, 2011 models, Chevy, 6.6L Diesel up to 2016	<b>\$24.49</b>
EZ-111	EZ Oil Drain Valve Fits: Ford- Power Stroke - 7.3L diesel ('93 to '09), 6.4L diesel ('08 & on), 6.0L diesel ('03 & on)	<b>\$24.49</b>
EZ-2	EZ Oil Drain Valve Fits: Cummins B-Series (3.3L, 3.9L & 5.9L), C-Series (8.3L, ISB, ISC, ISL, L9 engines, R2.8, International-DT466 ('05 & on), Maxxforce 7, DT, 9, 10 engines, paccar- PX-6, PX-7, PX-8, PX-9	<b>\$31.99</b>
EZ-211	EZ Oil Drain Valve Fits: Cummins Signature Series, ISX, QSX15, X15	<b>\$31.99</b>



## Winter Additives

Part No.	Description	Price
D20-16	Arctic Flow	<b>\$8.99</b>
D70-16	Carbon Crusher	<b>\$8.49</b>
D15-16	Arctic Power	<b>\$7.99</b>
F10-16	D-Gel Emergency Additive	<b>\$7.49</b>
A30-32	Air Brake Antifreeze	<b>\$4.99</b>

\*E-ZOIL performance additives are formulated for today's Ultra Low Sulfur Diesel and Biodiesel Blends. They meet all emission standards and provide added protection for your valuable diesel-powered equipment\*

## Hand Cleaners



\*Free dispenser with the purchase of four 85oz Hardy hands\*

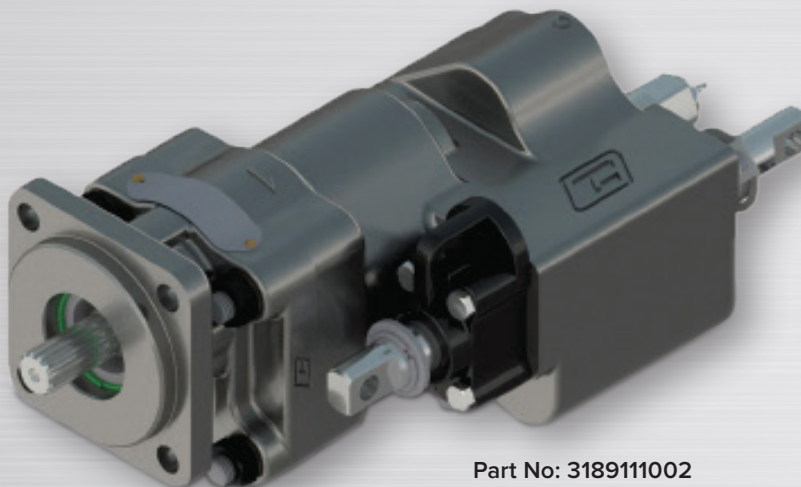
Part No.	Description	Price
C20-70	Hand-Cleaning wipes	<b>\$16.99</b>
C10-85	Hand Cleaner	<b>\$26.99</b>
C15-85	Cherry Crush Hand Cleaner	<b>\$21.99</b>
C10-DS	Hardy Hands Dispenser	<b>\$16.99</b>

Due to market conditions relating to COVID-19, all prices are subject to change without notice.

**www.pointspring.com**

Promotional pricing valid through October 31, 2023





Part No: 3189111002

## SG102 Dump Pump

### Reduced Dump Truck Cycle Time

The SG102 Dump Pump is part of Parker Hannifin's family of Commercial Hydraulics truck pumps. Building upon the technology of the industry standard C102/G102 pumps, the innovative SG102 Dump Pump provides a 37% faster dumping cycle versus the standard G102. It also utilizes the valve body of the larger frame size C Series dump pump, providing large dump pump flow characteristics for a faster dump cycle time, yielding greater work cycle efficiency.

#### Product Features:

- 25% greater flow than G102 2" dump pump
- 20% less weight than the C102 2.5" dump pump
- Large pump valve body flow characteristics
- 4-bolt "B" or 4-bolt DIN flange
- 13T "B" or 8T DIN shaft
- Pressures to 2500 PSI
- Manual or air shift option



*Visit a store today to learn more!*

Promotional pricing valid through Oct. 31, 2023

## POINT SPRING & DRIVESHAFT CO. LOCATIONS

**NEVILLE ISLAND, PA**  
7309 Grand Avenue  
Neville Island, PA 15225  
Ph: 412-264-6714  
Fx: 412-264-6722  
(800) 837-4713

**NEW CASTLE, PA**  
1001 Harbor Street  
New Castle, PA 16101  
Ph: 724-658-9076  
Fx: 724-658-8746  
(800) 837-8713

**TROY, PA**  
68 Canton Street  
Troy, PA 16947  
Ph: 570-297-5555  
Fx: 570-297-5510  
(855) 297-6380

**SARVER, PA**  
555 North Pike Road  
Sarver, PA 16055  
Ph: 724-352-3340  
Fx: 724-352-5311

**INDIANA, PA**  
1849 South Sixth  
Street Suite 5  
Indiana, PA 15701  
Ph: 724-463-3710

**GREENSBURG, PA**  
1967 Route 66  
Greensburg, PA 15601  
Ph: 724-834-0750  
Fx: 724-834-8747  
(800) 837-9713

**MEADVILLE, PA**  
11377 Mercer Pike  
Meadville, PA 16335  
Ph: 814-724-7746  
Fx: 814-724-7747  
(800) 724-7751

**CLEARFIELD, PA**  
1729 Industrial Park Rd.  
P.O. Box 1206  
Clearfield, PA 16830  
Ph: 814-765-9684  
Fx: 814-765-1577  
(800) 252-3585

**FAIRMONT, WV**  
274 Van Kirk Drive  
Fairmont, WV 26554  
Ph: 304-534-3306  
Fx: 304-534-5079  
(800) 837-1713

**AKRON, OH**  
1250 Triplett Blvd.  
Akron, OH 44306  
Ph: 330-724-1111  
Fx: 330-724-1895  
(800) 826-0673



**Point Spring & Driveshaft Co.**  
Since 1926

follow us on social media



Point Spring & Driveshaft Co.



@Pointspring1926